

VISUAL GUIDE FOR YOUR VISIT



AN ABBEY THEATRE PRODUCTION

THE LONG CHRISTMAS DINNER



ABBAY THEATRE
10 – 31 DECEMBER
ON THE PEACOCK STAGE

By Thornton Wilder
Directed by Raymond Keane
and Sarah Jane Scaife

ABBAYTHEATRE.IE
#THELONGCHRISTMASDINNER



funding
theatre

Principal Partner:

BANK OF AMERICA



An Roinn Turasóireachta, Cultúir,
Ealaíon, Gastrachta, Spóirt agus Meia
Department of Tourism, Culture,
Arts, Gaeltacht, Sport and Media

Image: Eric Savary

GETTING TO THE THEATRE

We are located on the corner of Lower Abbey Street and Marlborough Street, a few minutes' walk from O'Connell Street in the city centre.

BY BUS:

Dublin Bus:

Take any route which stops on or near O'Connell Street.

EXPRESSWAY/INTERCITY:

We're a five minute walk away from Busáras, the main bus station in the city centre, located at Store Street, Dublin 1.

DART:

The nearest station is Tara Street.

TRAIN:

Get off at Connolly Station which is located at Amiens Street, North Dock.

LUAS:

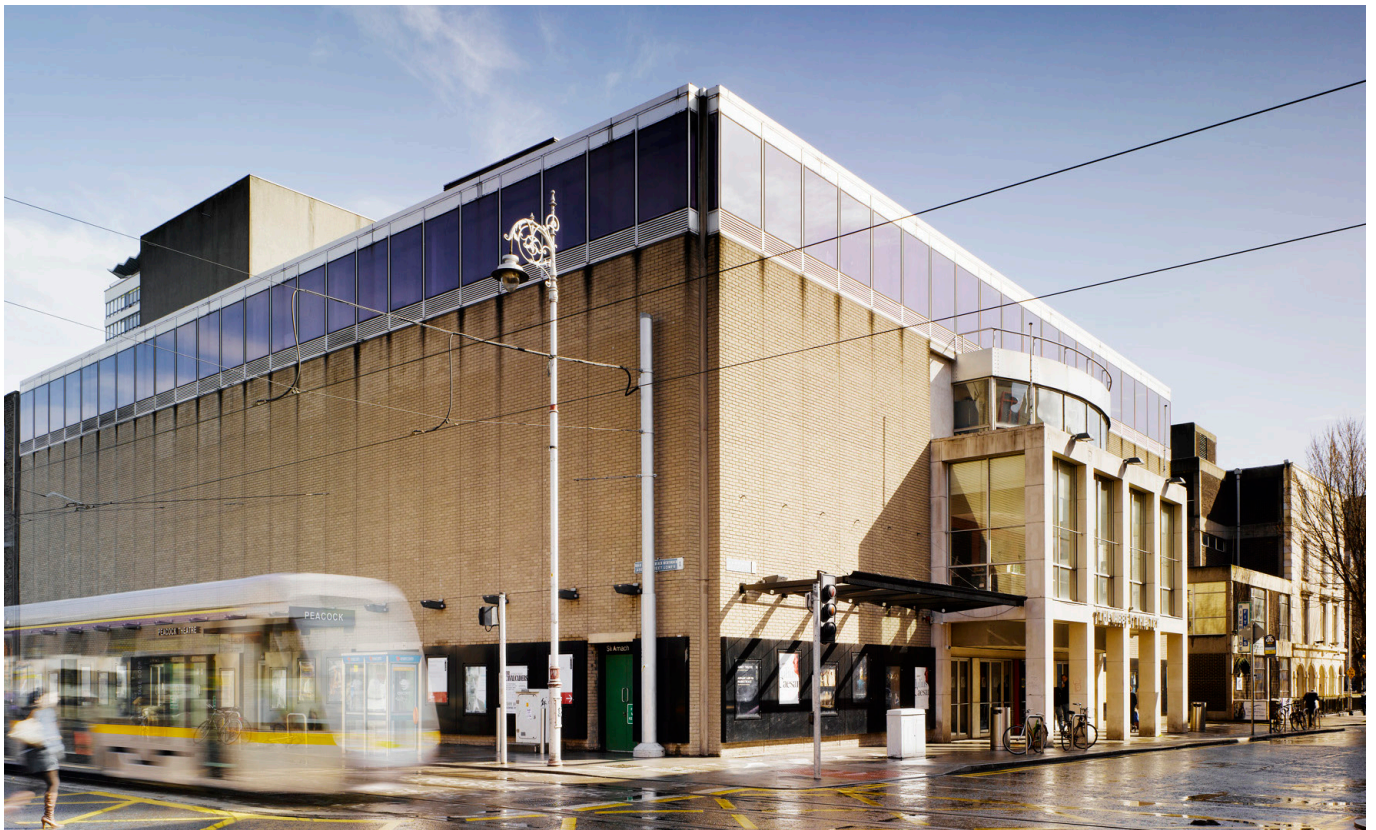
Take the Red Line to Abbey Street or the Green Line to Marlborough.

PARKING

Parking for the Abbey Theatre is in the following nearby locations:

Irish Life Car Park – car entrance is on Gardiner Street Abbey Street (Closes at 10pm)
Lower, North City, Dublin 1, D01 Y7V2

Dublin Q-Park, The Spire
Marlborough Pl, North City, Dublin 1, D01 W207



WHEN YOU ARRIVE

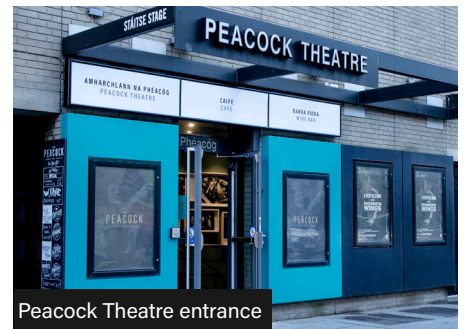
There are two entrances to the Abbey Theatre.

The main entrance is located on Marlborough Street.

The performance of *The Long Christmas Dinner* will take place in the Peacock Theatre. The entrance to the Peacock Theatre is on Abbey Street.



Abbey Theatre entrance



Peacock Theatre entrance

STAFF

The Abbey Theatre staff will make your visit as pleasant as possible. You will recognise the staff because they are wearing all black and have a badge on with the Abbey Theatre logo.



Abbey Box Office



Peacock Box Office

TICKETS AND ENTRY

You will need your ticket to enter the auditorium (the room the show will be performed in). If you have booked in advance, your ticket will be emailed to you and you can display it on your phone.

If you need to collect your ticket, it will be available from the Box Office in the Peacock Theatre from one hour before the performance.

Some audience members might be wearing a face mask and/ or ear plugs.

The foyer & cafe will look a bit different from these photos because we will have Christmas decorations up.

PEACOCK THEATRE

The entrance to the Peacock Theatre is located on Abbey Street. There is a set of automatic doors. You can use the elevator or stairs to bring you downstairs. There are 22 steps down which bring you to a foyer.



LIGHTS

The Peacock Theatre is underground, so once you go downstairs there are only electric lights.

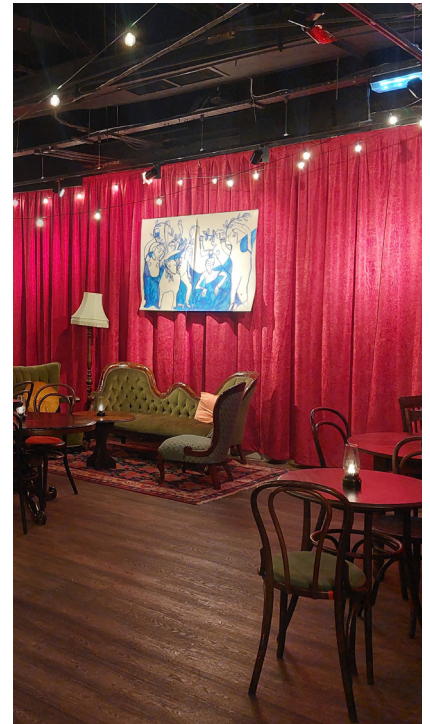
The foyer is in two areas. The outside area is dimly lit with spotlights above the tables and it is darker in the corners. There are lamps set on the tables. The inside area is well lit but not too bright. There are strings of lights hanging from the ceiling and art hanging on the walls.



SMELLS AND SOUNDS

In the foyer there may be the smell of perfume and hand sanitiser.

There will be music playing at a low level. Other sounds you might hear include: people moving cups, glasses, people chatting, the sound of the Luas going by upstairs.



TOILETS

All the toilets are accessible for everyone.

They are all located in the foyer area of the Peacock Theatre.

There are no hand dryers.

In the women's toilets there are three cubicles.

In the men's toilets there are two urinals and one cubicle.

In the accessible toilet there is a toilet and sink in the one room.

The toilets can be used throughout the performance.



THE PEACOCK AUDITORIUM

The performance will happen in a place called an auditorium.

The main entrance to the Peacock auditorium is past the foyer, up five steps and through a set of double doors. The wheelchair entrance is to the left of the main entrance and up a slight slope.



INSIDE THE AUDITORIUM

There are 123 seats in the Peacock auditorium. All of them look the same. A member of staff will show you to your seat.



The image to the left is the view the actors will have from the stage.

The image to the right is the view you the audience will have from the stage.





This is a photo of actors Emmet Byrne, Valerie O'Connor, Fionnuala Gyax, Will O'Connell and Rachel O'Byrne in a scene from the play. This photo was taken by Ros Kavanagh.

RELAXED PERFORMANCE

This is a relaxed performance.

During a relaxed performance, you are welcome to move, stim and make noise if you need to. It's also OK to enter and exit the auditorium during the show.

Don't worry if you think the actors may not like this – they know this is a relaxed performance and are happy for everyone to do what they need to to feel comfortable.

The lights in the auditorium will stay on at a low level throughout the show.

There may be some loud noises during the performance. If you need ear plugs, just ask a member of staff who can give you some. We have details of when the loud noises happen on the next page.

If you need to use it, there are quiet spaces in the cafe and foyer just outside the auditorium where you can go during the show. Then if you want to, you can go then back into the auditorium and enjoy the performance.

If you can, please try not to use your mobile phone or have the volume on during the performance. But if you need to, that's OK.



This is a photo all the actors in their full costume. This photo was taken by Ros Kavanagh.

ABOUT THE SHOW

The show is about 50 minutes long.

There are 12 actors who all play different characters throughout the show.

The play is set across a time period over about 90 years, starting in the early 20th century.

The play tells the story of the Bayard family over several generations across the 90 years. It shows them having dinner together at Christmas over and over again.

They talk and argue with each about their own lives and events happening in the world outside. The characters grow old and die and new characters are born.

The play leaps forward in time, and sometimes these changes are not always obvious. The Christmases across the years all follow into each other without a gap.

When you enter the auditorium there will be music playing. When the show begins, the music and lighting will change and the actors will come on stage.

At the end of the play, the actors will come on stage to bow. The audience will clap and some may even stand up and cheer.

CONTENT AWARENESS

If you are sensitive to certain things, you need to know about some things that happen during the show.

- people pretend to drink alcohol
- they talk at different times about the death of an infant, an adult child and the death of a parent
- you see people grieving
- there's a suggestion someone may have a mental illness
- a wheelchair will be used by able-bodied person
- there are repeated mentions of religion and family conflict
- there are lighted candles on stage



This is a photo of actors Will O'Connell, Fiona Lucia McGarry and Valerie O'Connor in a scene from the play. This photo was taken by Ros Kavanagh.

THEATRE STYLES

There are a lot of things in the play that are not like real life, so we have to use our imaginations.

FOR EXAMPLE

- The actors often use mime which means pretending they are using items that are not actually there; eating with knives and forks, cutting a turkey, placing napkins on their laps, drinking from glasses.
- The actors talk to servants who are not on stage.
- The actors speak with American accents.
- The actors wear costumes and have hairstyles and makeup that are from different time periods in the 20th century.

When characters are born they appear as babies in the nurse's arms. These babies are not real – they are dolls made of cloth. (See *in the photo above*)

The characters are shown at different ages throughout the play. When characters die, they walk off the stage into a white light with music playing.

Real candles are lit on stage during the show but don't worry – all the necessary safety precautions have been taken by the actors and the backstage team for having a flame on stage.

WHEN NOISES HAPPEN

- At the start and end of the play there is high pitched singing.
- About 32 minutes into the play there is the sound of drums, thunder and bombs. This lasts for about 1 minute.
- About 37 minutes into the play two of the characters shout at each other and physically fight and another character bangs on the table. This lasts about 1 minute.

**We hope you enjoy your experience at The Peacock.
Please contact us if you have any further questions.**